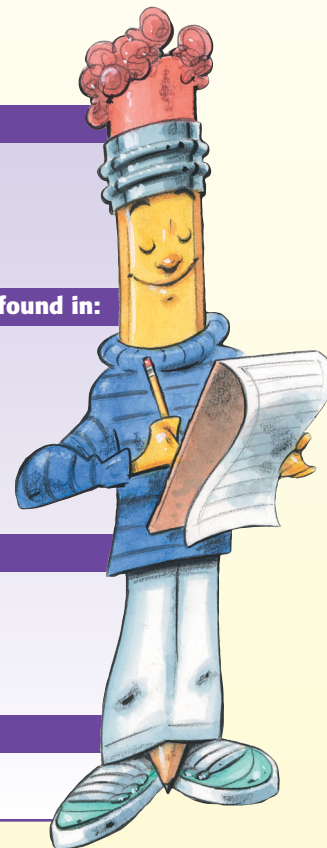


Finding Records

Kep this sheet in your writing folder for easy reference when you write research reports! Historical documents are primary resources and can give you fascinating information about a topic. The tricky part is knowing what they are and where to find them.

Personal papers can be found in: family archives historical societies family attics libraries	Census records can be found in: federal/national archives libraries state/county clerk's office
Business records can be found in: advertisements in old magazines old catalog local historical society corporate archives state libraries local business people	Photographs, postcards, and posters can be found in: historical societies museums archives state libraries family albums garage sales/auctions
Local government records can be found in: town clerk's office state archives local government archives local public schools	Organization records can be found in: state, university, and local libraries historical societies
Newspapers can be found in: libraries museum collections	Death records and wills can be found in: county clerk's office surrogate court



Get started by researching these helpful Web sites or books as you begin your report:

Web sites

U.S. National Archives and Records Administration
www.archives.gov

Office of the Clerk, U.S. House of Representatives
www.clerkweb.house.gov

Listings of state, college, and presidential libraries
www.publiclibraries.com

Ellis Island Immigration Museum
www.ellisland.com

Historical and Genealogical Societies of the U.S.
www.obitlinkspace.com/hs

U.S. Census Bureau
www.census.gov

Local business information
www.yellowpages.com

Books

The Family Tree Detective: Cracking the Case of Your Family's Story by Ann Douglas

Climbing Your Family Tree: Online and Off-Line Genealogy for Kids: The Official Ellis Island Handbook by Ira Wolfman

The Kid's Guide to Research by Deborah Heiligman

You Can Write a Report (You Can Write) by Jennifer Rozines Roy

Step-by-step Guide to Tracing Your Ancestors: How to Uncover Your Family Tree Using Easy-to-find Historical Information Including Wills, Birth Certificates, Marriage Documents and Parish Records by D. M. Field