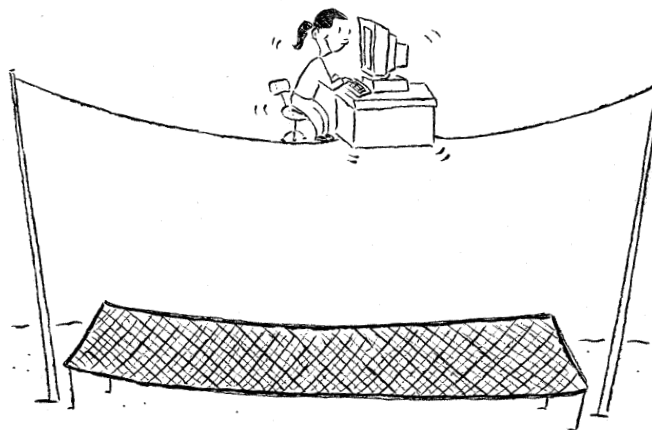
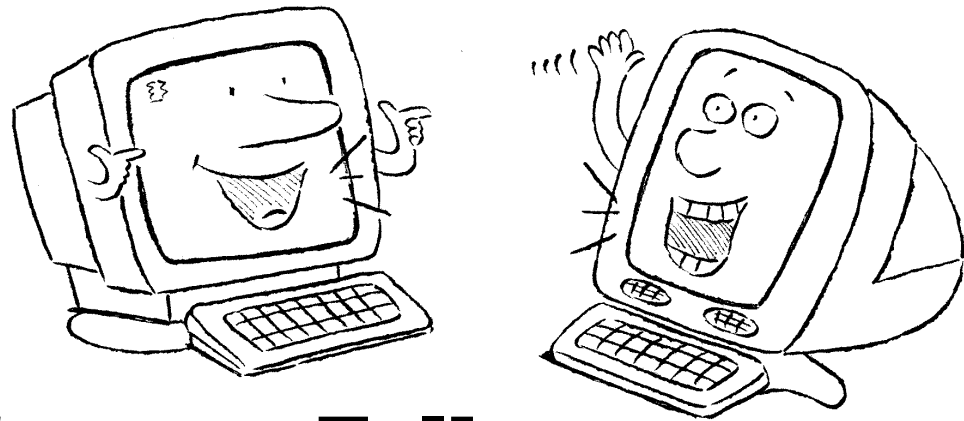


SAFETY on the NET



- 1.** When communicating with others online, never give out personal information, such as your full name, home address, school name and address, or telephone number.
- 2.** Do not send your picture to someone on the Internet without your parents' and/or teacher's permission.
- 3.** Do not agree to get together with anyone you meet over the Internet without first getting your parents' and/or teacher's permission. If you do arrange to meet someone face-to-face, go with a trusted friend and meet in a public place.
- 4.** Never respond to e-mail, chat comments, or any other messages that are hostile, inappropriate, mean, or make you feel uncomfortable in any way. If you do get such a message, tell your teacher or parent right away.
- 5.** If you come across any information or Web site that makes you feel uncomfortable, tell your teacher or parent right away.



New Ways to Talk

The Internet offers many options for communicating. You can send someone a message via e-mail, join mailing lists and discussion groups, or “talk” to someone live in a chat room. Read on for more.

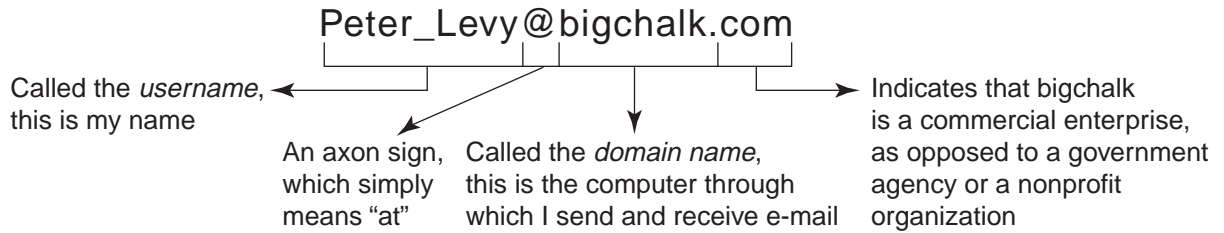
Electronic Mail (or E-mail)

E-mail is the most widely used part of the Internet. More than four trillion e-mail messages were delivered in the U.S. in 1999. Literally billions of e-mail messages are being sent around the world right now.

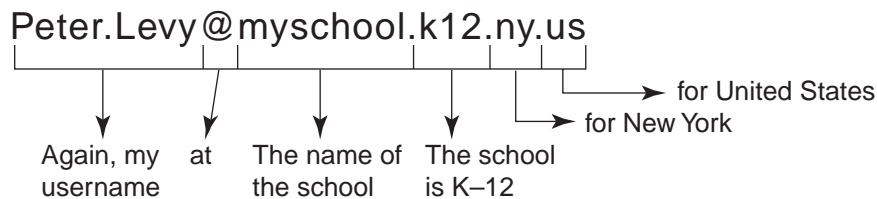
Why are so many people sending so many e-mail messages? Because it’s fast, fun, and best of all, it’s free. Once you log on to the Internet, you can send an e-mail message to anyone in the world who also has an e-mail account.

Your school may offer an e-mail software program, such as Eudora, or your network administrator may instruct you to send and receive mail through a Web browser. Gaggle.Net (at <http://www.gaggle.net>) is a popular, free e-mail service specially designed for teachers and their students. You don’t need any additional hardware or software. You and your students can simply access your e-mail from any computer that has an Internet connection—at school, in the library, or at home. Best of all, Gaggle.Net has a built-in monitoring system that lets you, the teacher, have control over your students’ e-mail.

If you are getting your first e-mail account through your school instead, your computer administrator will likely provide you with your e-mail address. Let’s look at two e-mail addresses to understand their elements:



Let’s look at another one:



NET TIP: What’s in a Name?

The dot followed by three letters at the end of an e-mail address gives you important information about the recipient. Take a look at the various domain types:

.com—commercial enterprise

.net—network service or commercial

.gov—government

.edu—education

.org—organization

.mil—military

An address that ends with dot followed by two letters is a country indicator. For example:

.us—United States

.fr—France

.uk—United Kingdom

.ca—Canada

.de—Germany

.nz—New Zealand

After you get your e-mail address, you’ll need to pick a *password*. Used for security purposes, passwords help keep your e-mail correspondence private. Select a password that’s easy for you to remember and don’t share it with anyone. Security experts believe that a non-word password—a combination of letters and numbers—is more secure. If you are very concerned about