

Special Education Students Selbyville Middle and Sussex Central Middle Schools, Indian River School District (Delaware) --DRAFT

Context

Selbyville Middle School was identified as a School Under Review by the Delaware Department of Education in the 2001-02 school year. While 82.6% of all students in grades 6-8 met the standard in reading on the Spring 2002 Delaware State Testing Program (DSTP), only 30.8% of the special education students did. These test results pointed to a considerable achievement gap between regular students and student receiving special education services.

Indian River School District piloted READ 180 at Selbyville Middle School during the 2003-04 school year for students in grades 6-8 performing in the bottom quartile of standardized assessments. This initiative was partially funded through a Helen F. Graham grant. Given that the typical student enrolled in the program was a reluctant reader at the beginning of the school year, the end of year data was impressive. Students not only showed improvement in the quantitative data, they also showed an increase in their positive attitudes toward reading in general.

Because of Selbyville's early successes, READ 180 was purchased for use at Sussex Central Middle School for the 2004-05 school year. Presented here are results for the DSTP reading test for 8th grade special education students in Selbyville only, and for 8th grade students in both schools. Also included are results obtained with the Scholastic Reading Inventory (SRI) for grades 6-8 for the district as a whole.

Results

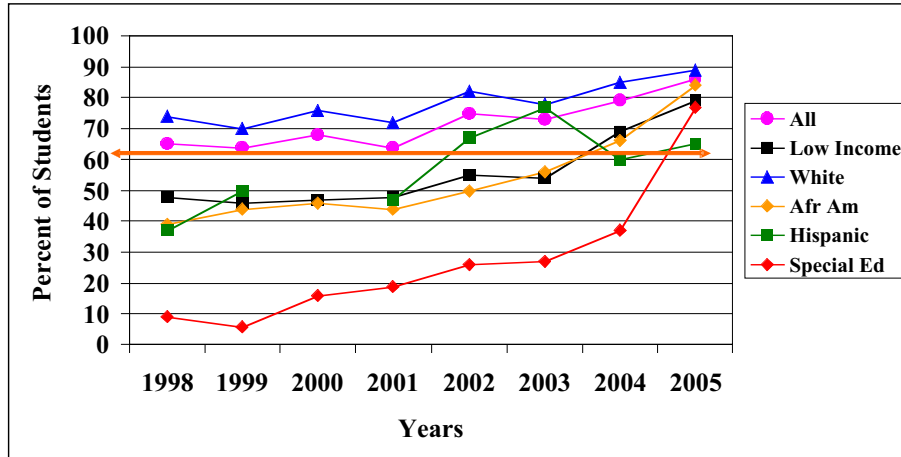
Performance on the DSTP Reading Test

Selbyville Middle School: In spring of 2003, 24% of Selbyville's 8th grade students receiving special education services met the standard on the DSTP reading test. In spring of 2004, 55% of the 8th grade special education students met the standard. This significant jump occurred after just 9 months of instruction with READ 180.

Selbyville and Sussex Central Middle Schools: As shown in Graph 1, The percent of 8th grade special education district students meeting the standard on the DSTP reading test went from 27% in spring of 2003, to 36% in spring of 2004, to 79% in spring of 2005. The increase from 2003 to 2004 corresponds to READ 180's first year of implementation in Selbyville. The increase from 2004 to 2005

corresponds to READ 180's second year of implementation in Selbyville and first year in Sussex Central.

**Graph 1. Indian River School District – 8th Grade Reading
Percent Meeting or Exceeding DSTP Standards**



Hispanic students numbered fewer than 15 in 2000

Performance on the Scholastic Reading Inventory

During the 2004-05 school year the Scholastic Reading Inventory (SRI) was administered to the Indian River School District students in grades 6-8 enrolled in the READ 180 program. The great majority of these students received special education services¹. Table 1 shows the average SRI scores for each grade for the fall and spring administrations, the average growth attained, and the percentage of students reading at grade level.

The percentages of students reading at grade level increased as follows: from 10.7% to 29.2% for grade 6, from 6.0% to 19.4% for grade 7, and from 9.2% to 35.4% for grade 8. For grades 6-8, the average growth attained is equivalent to at least two years (150-200 lexiles). This impressive growth was attributed by the district to the implementation of READ 180, including a robust professional development program. Thus READ 180 has been credited with significantly narrowing the performance gap in reading between regular students and students receiving special education services.

A graphic representation of these data is shown in Graphs 2 and 3.

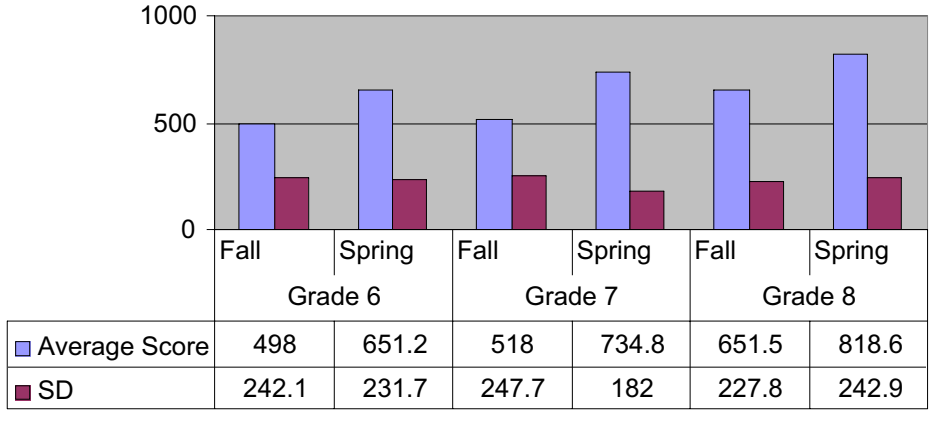
Table 1. Indian River School District: SRI Average Scores (Lexiles) for READ 180 students in 2004-05

	Grade 6		Grade 7		Grade 8	
	Fall	Spring	Fall	Spring	Fall	Spring
N	65	65	57	56	62	60
Average SRI Score	498	651.2	518	734.8	651.5	818.6
Standard Deviation	242.1	231.7	247.7	182	227.8	242.9
Average Growth: Fall-Spring	153.2		216.8		167.1	
% Reading at Grade Level	10.7	29.2	6.0	19.4	9.2	35.4

¹ The actual breakdown for each grade level is as follows:

6th grade: 86% special ed. (56 students), 6% regular ed. (4 students), and 8% ELLs (5 students).
7th grade: 79% special ed. (45 students), 19% regular ed. (11 students), and 2% ELLs (1 student).
8th grade: 85% special ed. (55 students), 9% regular ed. (6 students), and 6% ELLs (4 students).

Graph 2. Indian River School District: SRI Average Scores (Lexiles) fo READ 180 Students in 2004-05



Graph 3. Indian River School District: Growth in SRI Average Scores (Lexiles) for READ 180 Students in 2004-05

