

ACTIVITY 2: Sound Match

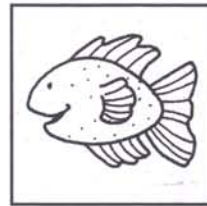
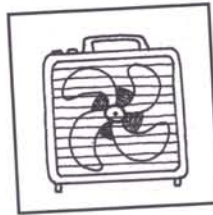
SKILL: phoneme discrimination (practice page)

Sound Match is designed to assess children's abilities to identify pictures whose names contain the same initial, medial, or final sound. *Middle Match* (see page 14) asks children to identify pictures whose names have the same medial sound.

Using page 14 as a template and the pictures cards on pages 28 and 29, you can create the following additional activity pages:

Beginning Match (initial sounds)

- Page 1: fan, fish, leaf, lock, man, mop, six, sock
- Page 2: ball, boat, dog, duck, gate, goat, ten, top

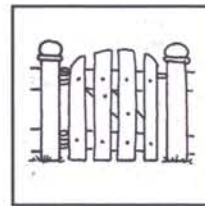


Middle Match (medial sounds)

- Page 1: gate, cake, boat, soap, feet, leaf, kite, nine
- Page 2: bat, can, fish, pig, sock, top, sun, duck

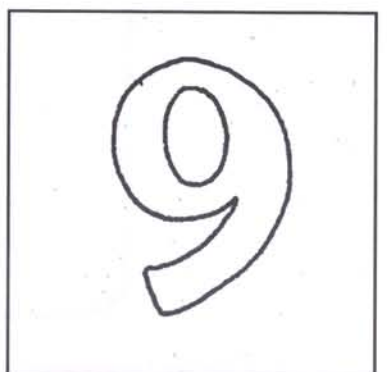
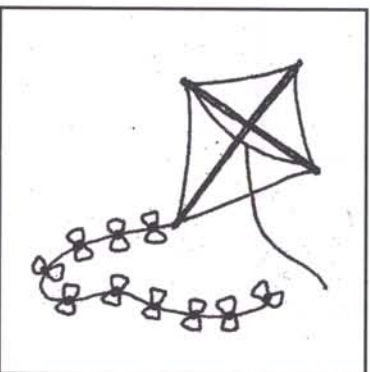
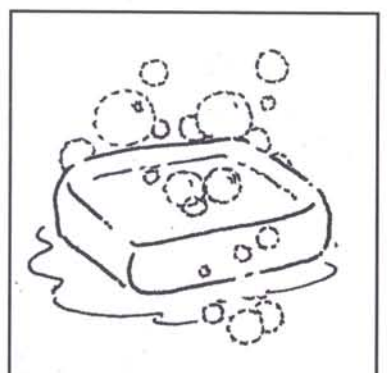
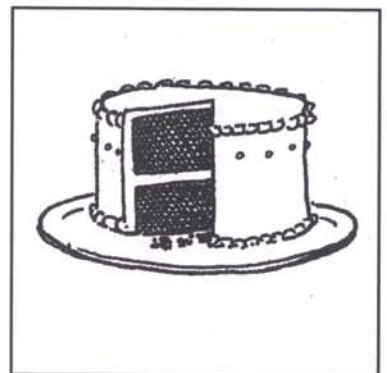
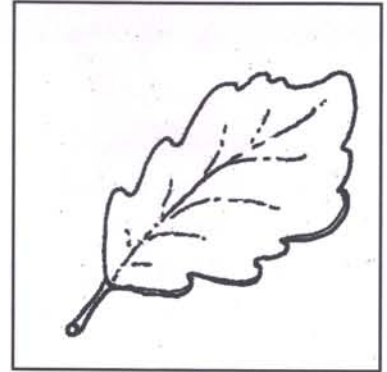
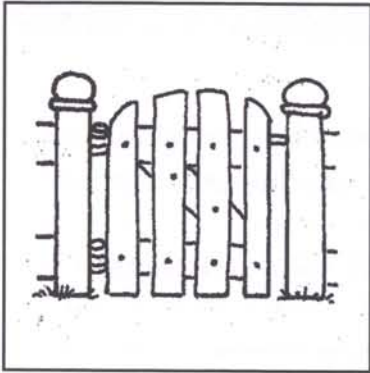
Ending Match (final sounds)

- Page 1: bat, feet, bus, glass, cake, duck, can, sun
- Page 2: coat, gate, man, ten, soap, mop, wheel, ball

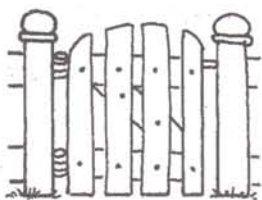
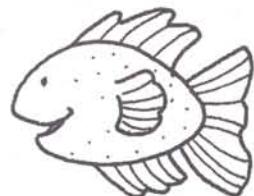
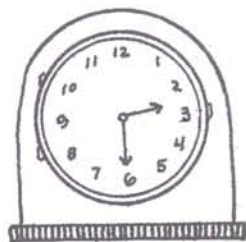
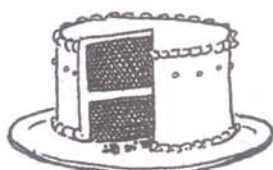
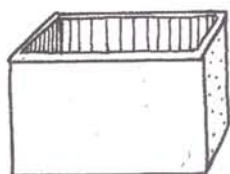
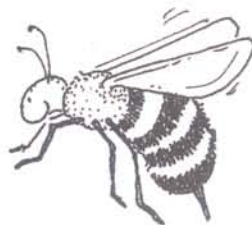


SUGGESTION BOX: Initial sounds are the beginning sounds in words, such as /s/ in the word *sat*. Medial sounds are the middle sounds in words, such as /a/ in the word *sat*. Medial sounds are the most difficult for children to auditorily discriminate. Do not expect early mastery of this skill. Final sounds are the ending sounds in words, such as /t/ in the word *sat*.

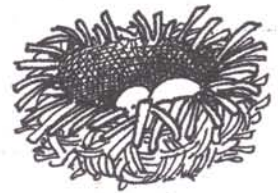
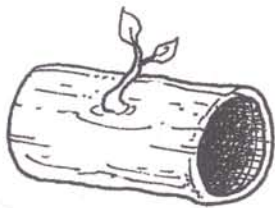
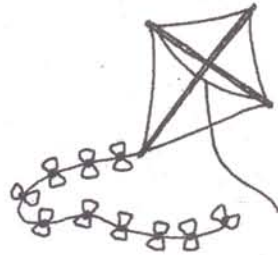
Middle Match



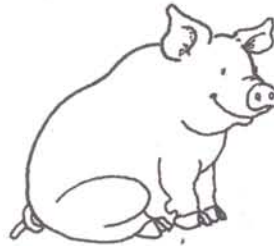
Picture Cards



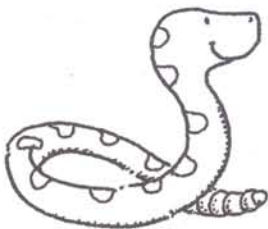
Picture Cards



9



6



10

