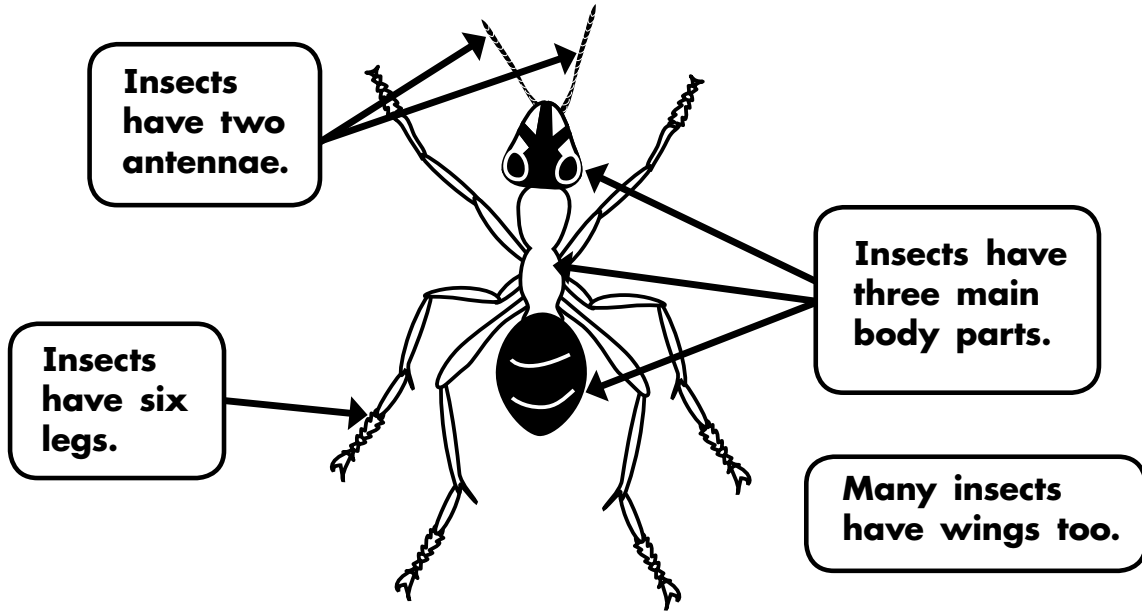


Is It an Insect?

Look at the diagram of an ant. Then answer the questions below.

Ant Diagram

An ant is an insect. Most insects have these body parts.



1. How many legs does an insect have?

8

6

4

2. How many main body parts does an insect have?

1

2

3

3. How many antennae does an insect have?

2

4

6



Circle the picture that is not an insect.

