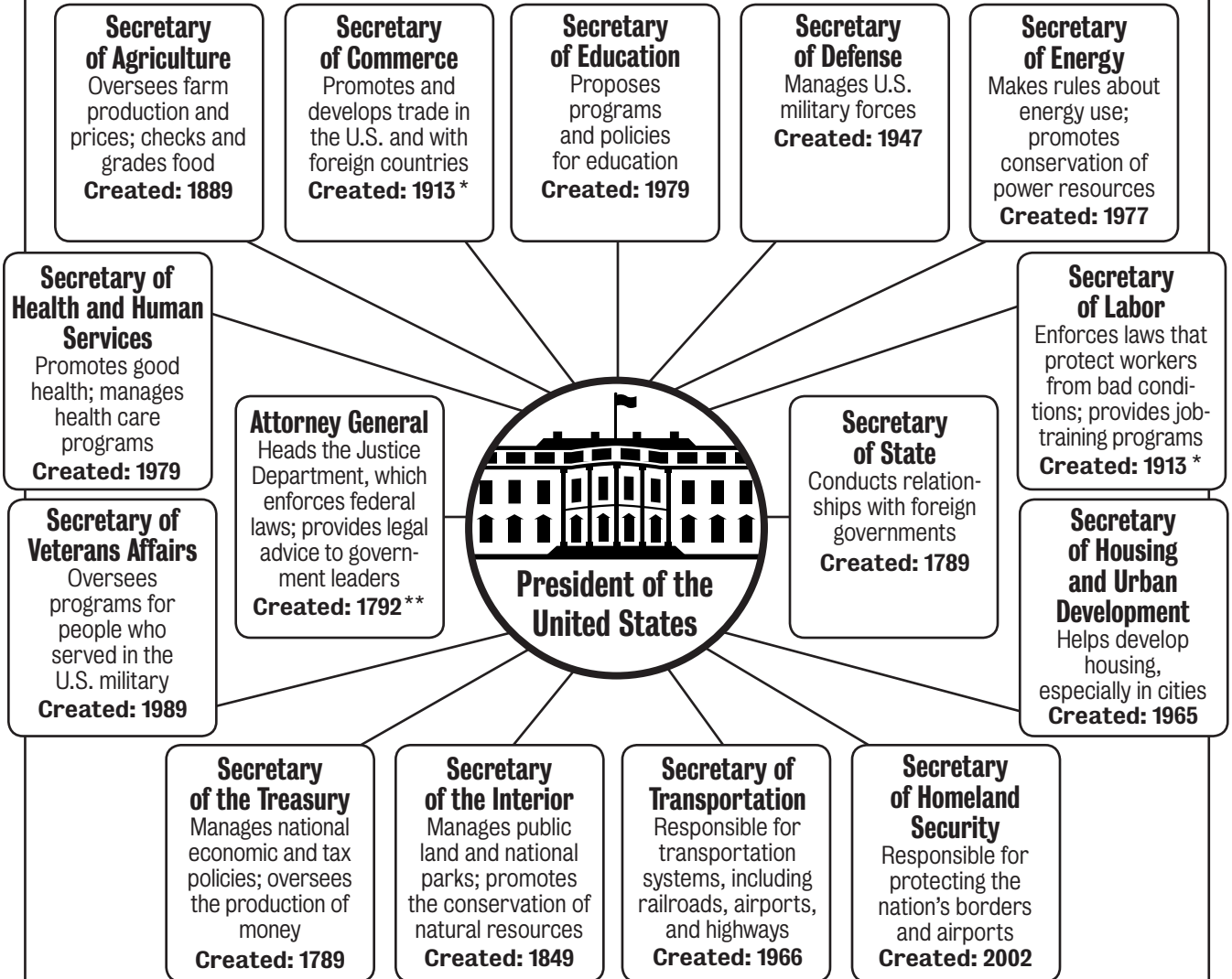


Name: \_\_\_\_\_

# Executive Team Players

A President's Cabinet members advise him or her, and each heads one of the 15 major federal departments of the executive branch of the nation's government. The chart below describes the duties of each of the 15 positions and lists the year each was made part of the Cabinet. Use the chart to answer the questions that follow.



1. Which Cabinet member is responsible for carrying out national education policies? \_\_\_\_\_
2. Which Cabinet position was created most recently? \_\_\_\_\_
3. Which Cabinet member oversees national parks? \_\_\_\_\_
4. You can guess that which three Cabinet members would be most involved in advising a President on national-security issues? \_\_\_\_\_

\* Originally, Commerce and Labor were one department. They were split up in 1913.

\*\* The Justice Department, with the Attorney General as its leader, was created in 1870.