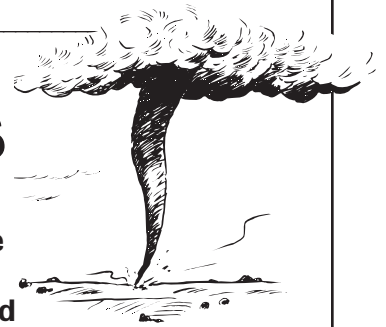


Name: _____

Powerful Twisters

This week, you read about tornadoes that recently hit Oklahoma and Georgia. Some of those twisters reached a rating of F4 on the Fujita scale, also known as the “F-scale.” It is used to measure the strength of a tornado. The strongest tornadoes ever recorded were F5s. Read the chart to see the damage done by category F0 to F5 tornadoes. Then answer the questions.



Measuring Tornado Damage: THE FUJITA SCALE

F-Scale Category	Estimated Wind Speed	Damage
F0	Less than 73 mph	Light: Damage to chimneys and signs; small trees uprooted (pulled out of ground).
F1	73-112 mph	Moderate: Pieces of roofs blown off; mobile homes turned over; moving cars pushed off road.
F2	113-157 mph	Considerable: Entire roofs torn off houses; mobile homes destroyed; large trees uprooted; cars lifted.
F3	158-206 mph	Severe: Roofs and walls torn off houses; most forest trees uprooted; heavy cars lifted from ground and thrown.
F4	207-260 mph	Devastating: Houses destroyed; small houses sent airborne.
F5	261-318 mph	Incredible: Bigger, more sturdy homes lifted and thrown; cars fly distances more than 100 meters; tree bark stripped.

Source: www.noaa.gov/

1. What is the estimated wind speed of an F0 tornado? _____
2. What is the lowest-category tornado that can move cars? _____
3. True or false: 270 mph is a possible wind speed for an F4 tornado. _____
4. How many miles-per-hour faster is the lowest estimated wind speed of an F4 than that of an F3? _____
5. What category tornado causes damage described as “severe”? _____

BONUS: Why do you think it might be helpful for experts to measure and record the strength of a tornado using the F-scale? How might data that they record be used?
