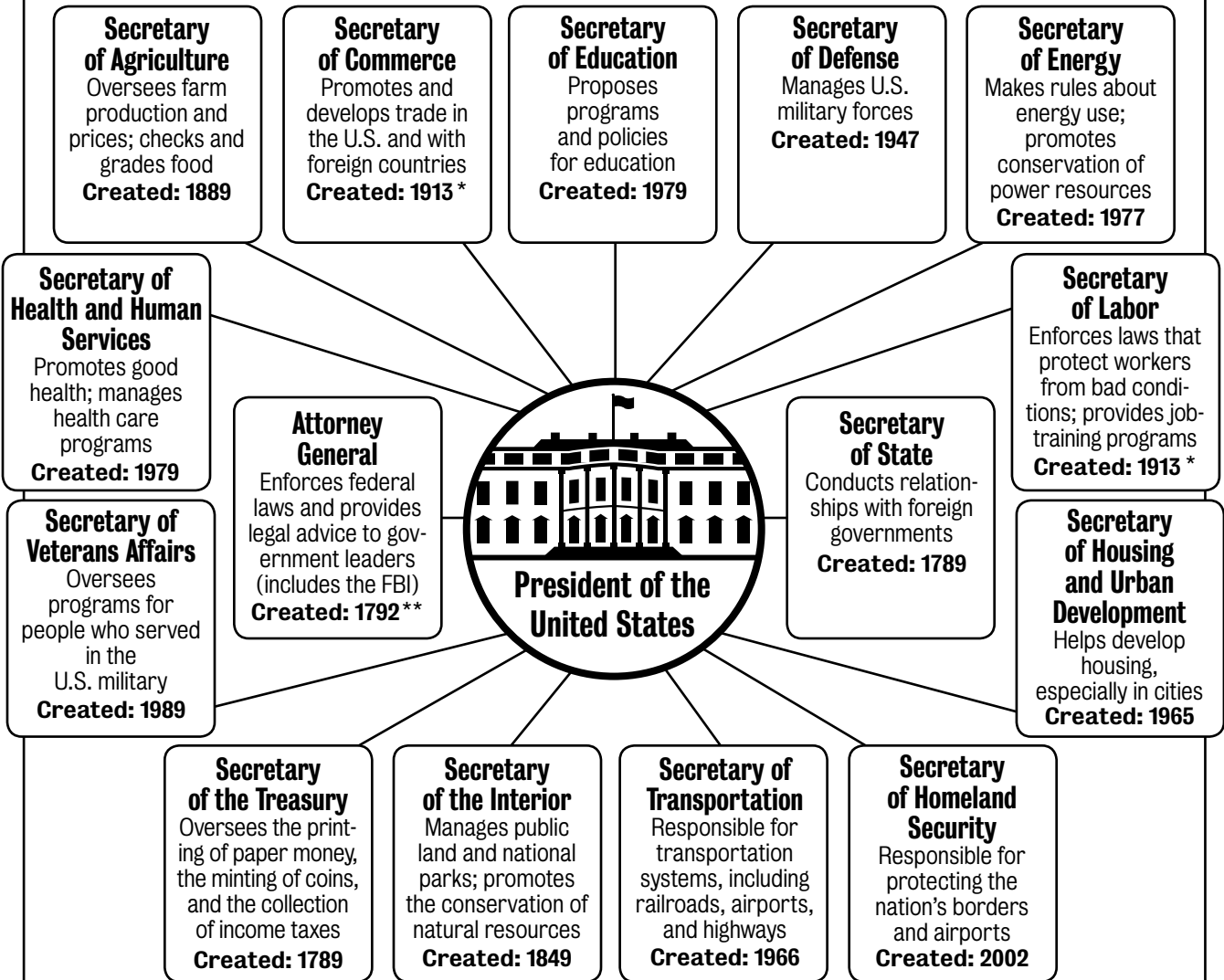


Name: \_\_\_\_\_

# Executive Team Players

A President's Cabinet members advise him or her, and each heads one of the 15 major federal departments of the executive branch of the nation's government. The chart below describes the duties of each of the 15 positions and lists the year each was made part of the Cabinet. Use the chart to answer the questions that follow.



1. Which Cabinet member is responsible for protecting the nation's borders? \_\_\_\_\_
2. Which Cabinet member deals with issues involving people currently in the military? \_\_\_\_\_
3. Which two Cabinet members deal with issues involving businesses and jobs? \_\_\_\_\_
4. You can guess that which three Cabinet members would be most involved in advising a President on national security issues? \_\_\_\_\_

\* Originally, Commerce and Labor were one department. They were split up in 1913.

\*\* The Justice Department, with the Attorney General as its leader, was created in 1870.