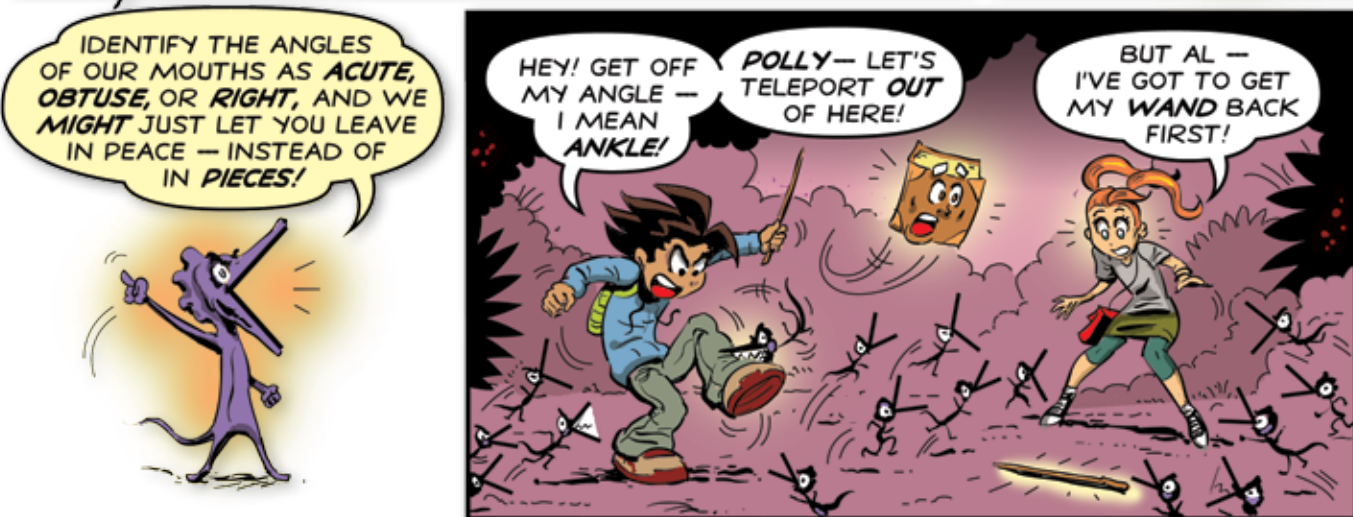
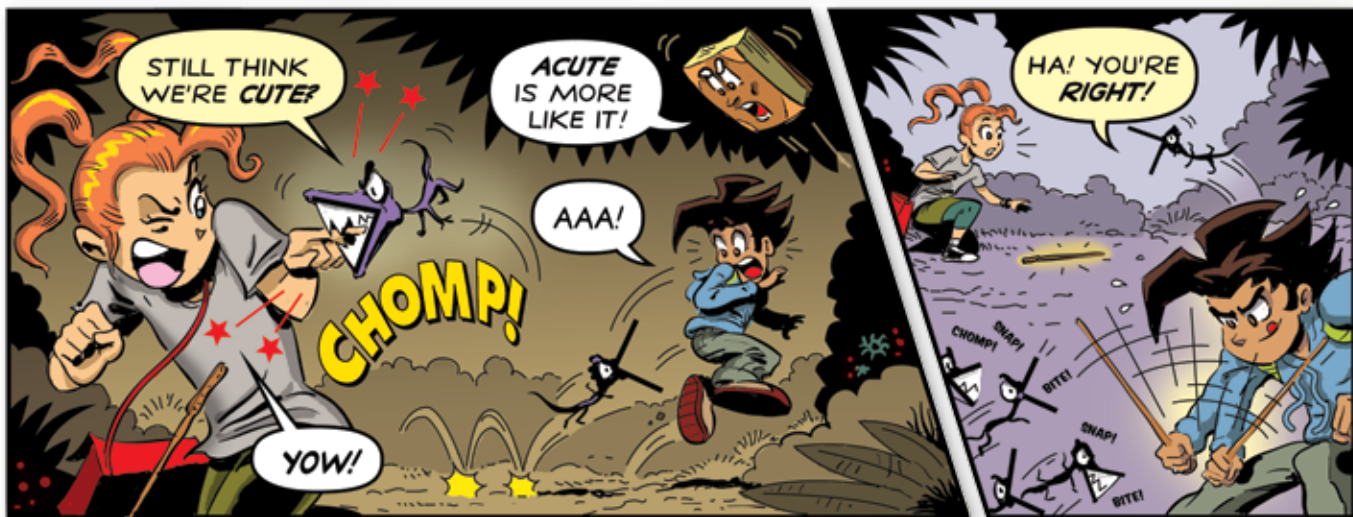
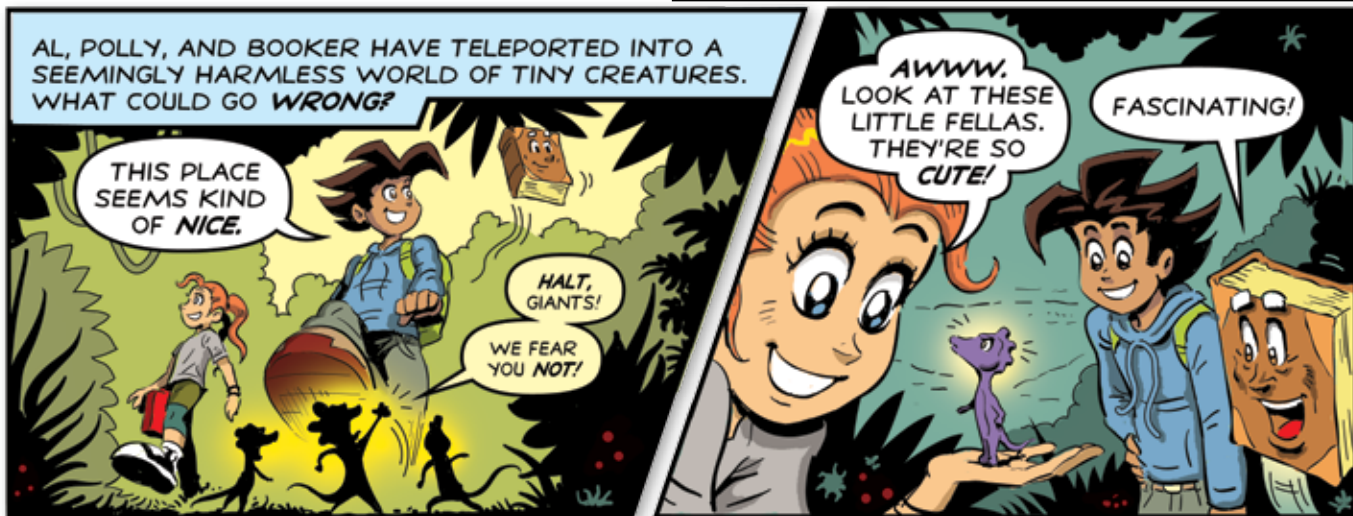


MATHWIZ COMICS

DON'T CALL THEM "ACUTE"!



WHAT TO DO: Don't let our heroes get bitten to bits—identify the angles of the little aliens' giant mouths!

INSTRUCTIONS BY BOOKER: CLASSIFYING ANGLES
Right angle: Measures 90° and looks like the corner of a square.
Acute angle: Measures greater than 0° but less than 90° .
Obtuse angle: Wider than a right angle; it measures greater than 90° but less than 180° .

1 Halt this little creature's attack: Identify her angle as acute, obtuse, or right:



2 This mega-mouth is about to chomp on Al! How should you classify the angle?



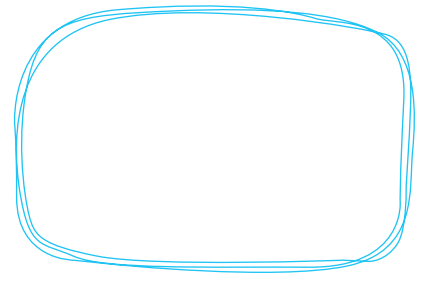
3 Say "Aaaa!" Polly is being chased by this mouth! Classify the angle:



4 Booker is about to be bitten! What type of angle is coming after him?

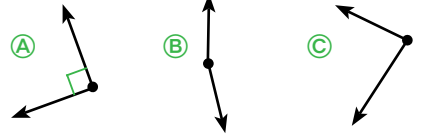


5 Al is being chased by an obtuse angle that is about as small as an obtuse angle can be. Draw such an angle here:

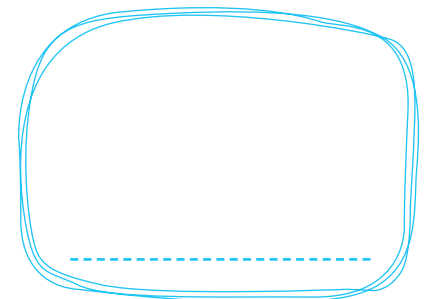


SOLVE THE QUESTIONS FIRST! THEN READ THIS.

6 Snack time for these three angles! To stop them from going after Polly, fill in the circle of the greatest acute angle.



7 Booker will be "chewed out" if you can't draw an angle that's about 135° and classify it!



8 When the aliens let Polly have her wand back, Al and Polly hold their wands at a 49° angle to each other. Before they can cast their spell, an alien asks, "What is the least number of degrees you could add to that angle to make it obtuse?" Well? Answer so our heroes can get out of there!

