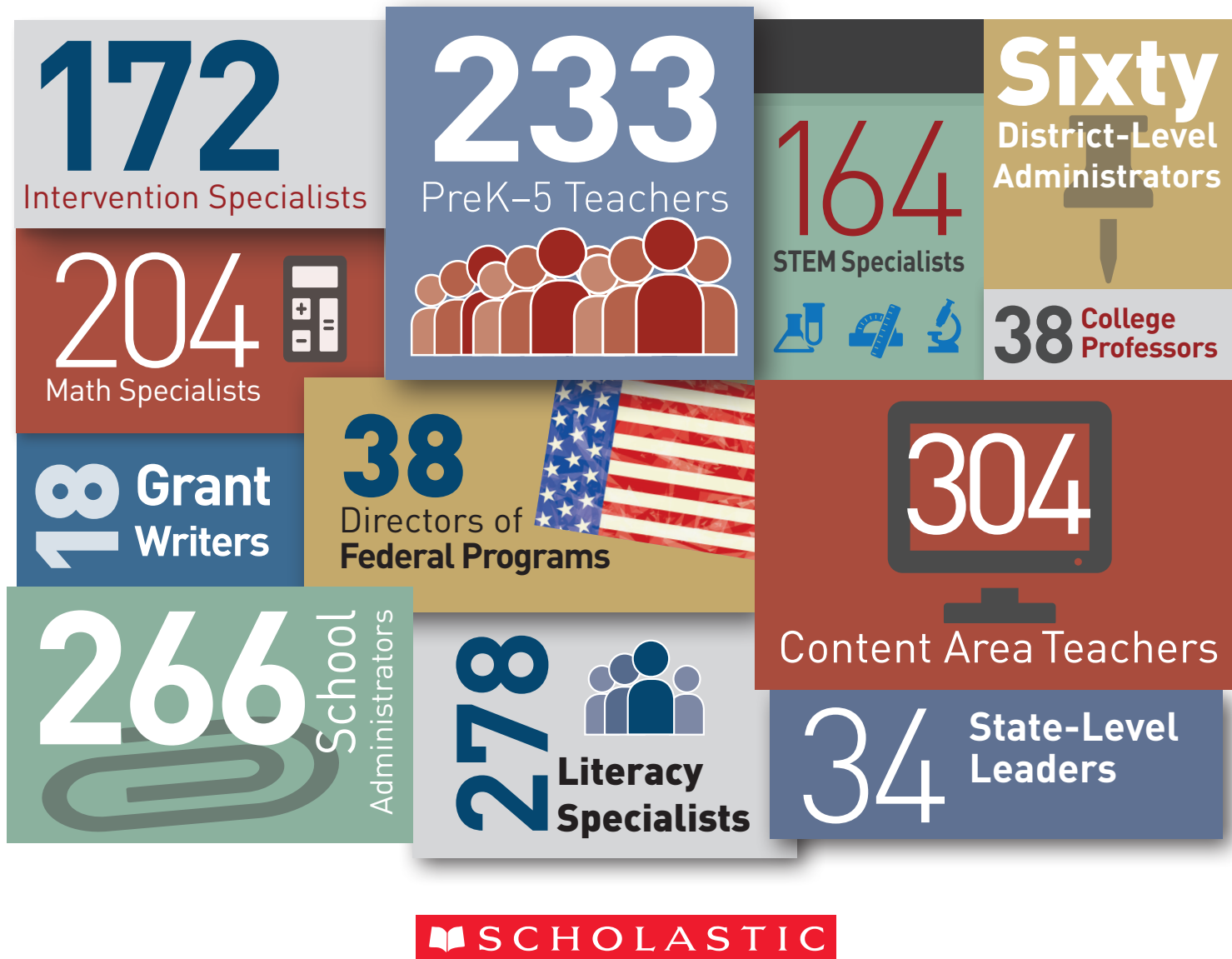


WHO WE ARE

Our esteemed network of literacy and math consultants includes former teachers and leaders that have “walked the walk.” They bring first hand experience with school- and district-level challenges, as well as knowledge of theory and practice to help teachers and leaders make a difference in schools.



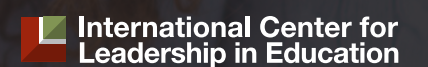
PROFESSIONAL LEARNING for **Literacy, Math & Leadership**



Visit scholastic.com/sap or call **1.800.387.1437, ext. 6341**
to learn more about our work helping schools and districts like yours.



SCHOLASTIC
ACHIEVEMENT PARTNERS®



SCHOLASTIC

ACHIEVEMENT PARTNERS®

School and district leaders are taking important steps to improve school performance and prepare students for the rigorous demands of school and life. We know the pressure you feel: the stakes are high, the demands endless, and the time limited.

The challenge is daunting but experience and research shows that the best investment you can make is in your people. Scholastic Achievement Partners (SAP) brings together world-renowned authors, academics and experts in literacy, mathematics and leadership from three respected organizations—Scholastic, Math Solutions, and ICLE—to help educators achieve system-wide success.

WE CAN HELP

You're likely navigating **multiple mandates** and wrestling with how to make lasting improvement in one or more of **5 key areas**. We can help by focusing on...

Systemwide Achievement | PAGE 6

Leadership Development | PAGE 8

Professional Learning for Teachers | PAGE 10

Program Implementation Support | PAGE 14

Family and Community Engagement | PAGE 16

3 RESPECTED ORGANIZATIONS,
1 Comprehensive Solution



Meet Our Team

We are a team of over 700 teachers and leaders

working shoulder to shoulder with educators to develop great leaders, foster effective teaching, and transform school performance.

We focus on instructional and organizational excellence as the driver of student success.

Senior Vice President, Strategic Alliances, **Harold Edwards** focuses on data to help school and district leaders create meaningful, sustainable change.

Lisa Rogers, from our Math Solutions team, partnered with **Osceola County Schools (FL)** to help every math teacher understand and implement new standards.

Yakima School District (WA) partnered with **Scott Traub** to transform instruction for college and career readiness.



Literacy Consultant **Tami Williams** works closely with Instructional Leadership Specialists in Springfield (MA) to build capacity for supporting teachers in their implementation of *Traits Writing*.

Paige Ward worked with **Joplin School District (MO)** to implement *READ 180* with fidelity and achieve significant improvements in reading for students in Grades 3–9.

The **School District of Philadelphia (PA)** increased student achievement thanks to the guidance of **Lanette Reese Jones**.

Like all **Directors of Academic Planning**, **Tracy Weeden** works to articulate unique challenges and connect organizations with the people, services, and programs that they need to find success.

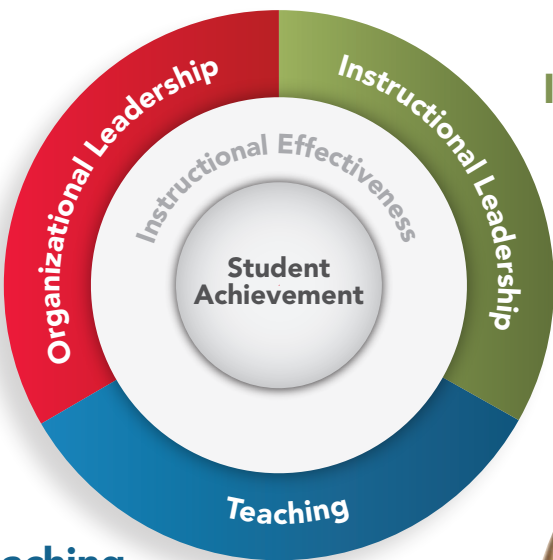
Our Approach

When improving student performance is the goal, rigorous instruction is the way, and stakeholders at all levels of the organization must be focused on making it a reality in each and every classroom.

That is why our **System for Effective Instruction** (SEI) guides all of the work we do in schools and districts nationwide.

Organizational Leadership

School leaders must create a shared vision and culture for success, with organizational systems aligned to support student achievement.



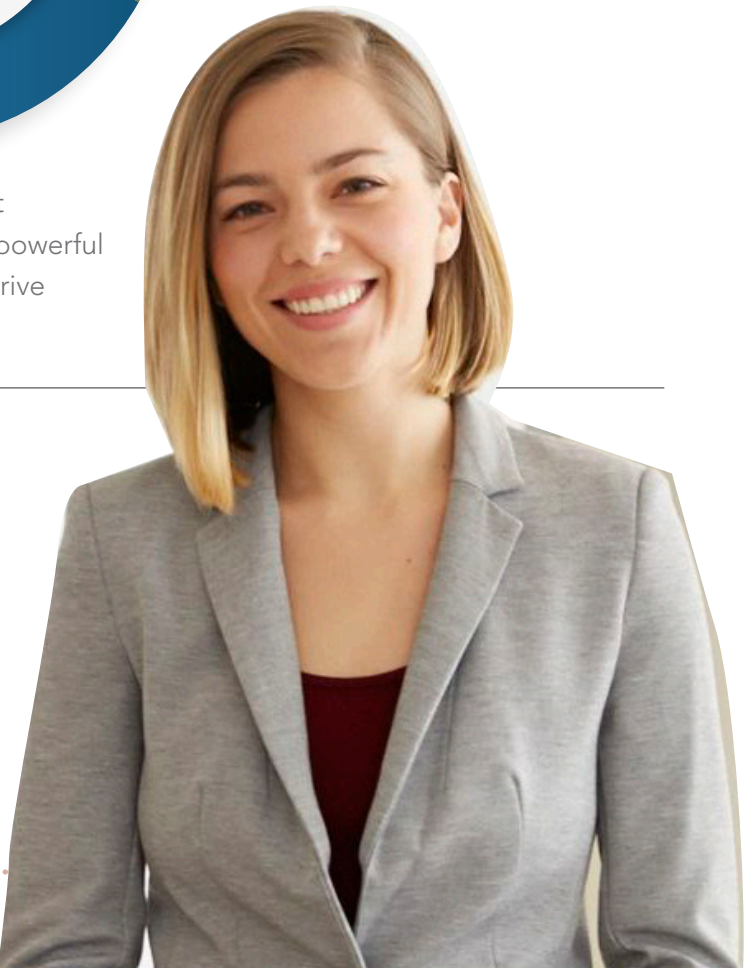
Teaching

Teachers must have deep content knowledge and be armed with a powerful set of instructional strategies to drive student achievement.

This framework facilitates a coherent focus across your entire educational organization on the development and support of instructional effectiveness to improve student achievement.

Instructional Leadership

Instructional priorities must be clearly defined, with data used in a systematic way to drive decision making and ongoing opportunities provided for professional growth.



Data drives everything we do...

We know that no two schools or districts are exactly the same. That is why our partnerships are based on a deep understanding of your specific goals and challenges. All of our work is **grounded in data** and tailored to meet your needs. We support. . .

Organizational leaders

who must ensure that easy-to-use, relative data systems are built, and that training is provided at all levels—because meaningful data systems are the key to monitoring systemwide improvement and progress toward goals.

Instructional leaders

who must have systems in place to provide teachers with a clearer understanding of student data and how to apply that understanding to actionable instruction and interventions. They must also have a system in place to monitor effective use of data.

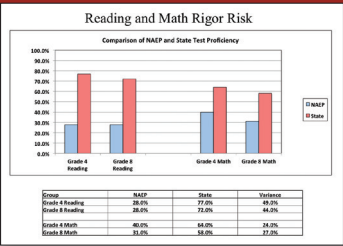
Classroom teachers

who must ask themselves: “Did they ALL get it? How do I know? How do I measure mastery? How do I help those students who didn’t?” We help teachers use assessment data to differentiate instruction and track student growth toward proficiency.

Sometimes we find that schools and districts have tons of data but don’t know how to use it effectively. Our Directors of Academic Planning will work with you to. . .

Analyze Your “Rigor Risk”

We can help you analyze the data you have. For instance, looking at the point spread between your state test and NAEP can help you understand the number of students that may need intervention treatments, the professional learning needed for staff to adjust to the new standards, and how to manage your communication with stakeholders.



Quantify Student Achievement Gaps

Our Gap Analysis tool mines your existing data to help segment your students for tiered delivery of curriculum, based on proficiency bands. This can help you determine how to allocate resources and how to forecast “treatment” duration for different student populations.

Systemwide Achievement

The System for Effective Instruction (SEI) guides all of our work around Systemwide Achievement. We help schools and districts look at all aspects of their systems to make strides in areas such as **transitioning to higher standards, meeting requirements of teacher evaluation frameworks, and nurturing a growth mindset.**

Transitioning to Higher Standards

Whether you live in a state that is implementing the Common Core State Standards or you are following your own state’s higher standards, the goal is the same: you want to realign curricula, increase rigor, and help students apply what they learn in the classroom to the real world.

Transformation of this magnitude is attainable, but only when teachers and leaders have the professional support they need. We meet you where you are and take you where you need to be.

You can rely on our three-step approach for help. We have a proven track record of helping schools and districts reach their goals.

Ensure a Successful Transition With Support in Four Key Areas:

- MODULE 1
Building Knowledge of Instructional Shifts
- MODULE 2
Designing Next Generation Curriculum
- MODULE 3
Designing Next Generation Assessment
- MODULE 4
Planning Instruction to Engage All Learners



SAP’s Account Executive **Lindsay Litzinger** helped the **San Jacinto School District (CA)** successfully transform curriculum and instruction for Grades K–12 to address higher standards.

Preparing for Evaluation Requirements



Despite the current emphasis on evaluative measures and compliance, we know your aim is to provide teachers with growth opportunities in support of the end goal: increasing student learning.

Regardless of the framework you’re using, our blend of in-person coaching and powerful online tools supports leaders and teachers in providing every student with the kind of instruction they need to succeed.

OUR COLLABORATIVE INSTRUCTIONAL REVIEW PROCESS provides teachers with formative feedback, ensuring teacher growth and real impact on classroom practice. We look for proof of instructional effectiveness among both teachers and students, while measuring success along the way.

Nurturing a Growth Mindset

School communities with a growth mindset never give up! They know that with enough grit and determination, anything is possible—including greater motivation, better grades, and higher test scores.

Through our partnership with Mindset Works, an organization founded by Dr. Carol Dweck, we’re perfectly positioned to help your leaders, teachers, students, and community.

Our professional learning provides teachers and leaders with knowledge and tools to embrace a growth mindset and support it in the classroom.

Everyone pitches in to make success happen, and with our support, all of your team will begin to support learning, accept honest feedback, collaborate with colleagues, strengthen practice, and recognize that all students can learn and succeed.



Leadership Development

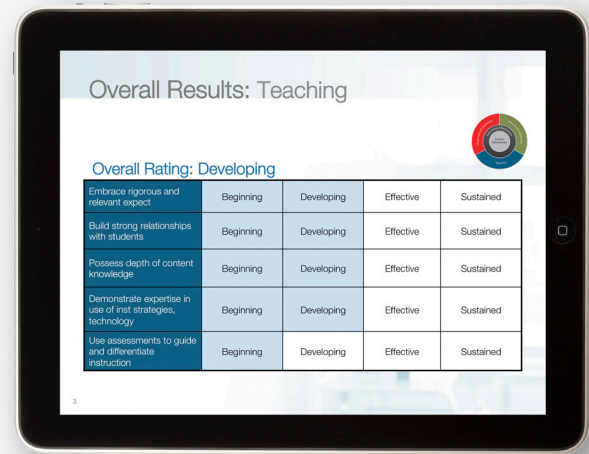
It's no secret that effective leadership is essential to creating lasting change in schools and districts nationwide. High-achieving schools have leaders who are not afraid to address the many barriers to student learning. Our leadership consultants and coaches help develop current and emerging leaders to drive dramatic and sustainable student achievement. We have over 20 years of experience supporting district and building administrators around the key areas of **instructional and organizational leadership**.

Needs Assessment and Strategic Planning

Our senior leadership consultants work collaboratively with you and your team to determine where you are and where you want to be, utilizing many tools such as the Collaborative Instructional Review, WE Surveys, and the Gap Analysis. The resulting data from these tools comes together in an actionable Strategic Plan which serves as a road map to guide our work.



	Beginning	Developing	Effective	Sustained
Create a Culture of High Expectations	Beginning	Developing	Effective	Sustained
Create a Shared Vision	Beginning	Developing	Effective	Sustained
Build Leadership Capacity	Beginning	Developing	Effective	Sustained
Align Organizational Structures to Vision	Beginning	Developing	Effective	Sustained



	Beginning	Developing	Effective	Sustained
Embrace rigorous and relevant expect	Beginning	Developing	Effective	Sustained
Build strong relationships with students	Beginning	Developing	Effective	Sustained
Possess depth of content knowledge	Beginning	Developing	Effective	Sustained
Demonstrate expertise in use of inst strategies, technology	Beginning	Developing	Effective	Sustained
Use assessments to guide and differentiate instruction	Beginning	Developing	Effective	Sustained



	Beginning	Developing	Effective	Sustained
Align Curriculum to Standards	Beginning	Developing	Effective	Sustained
Integrate Literacy and Math Across Content Areas	Beginning	Developing	Effective	Sustained
Facilitate Data-Driven Decision Making	Beginning	Developing	Effective	Sustained
Provide Opportunities for Focused PD	Beginning	Developing	Effective	Sustained

Leadership Institutes and Professional Learning

Through intensive institutes, face-to-face courses, and online tools, we provide leaders with the support they need to make effective change. Our courses address a variety of topics, including foundations for effective organizational and instructional leadership, and can be customized to meet your individual needs. Institutes are often built around our senior fellows, who are recognized worldwide for their innovative work in education.



Dr. Bill Daggett
Founder and Chairman, ICLE



Sue Gendron
President, ICLE



Eric Sheninger
Senior Fellow, ICLE



Ray McNulty
Senior Fellow, ICLE



Dr. Susan Szachowicz
Senior Fellow, ICLE

Join Us At Our Model Schools Conference!
With 100+ concurrent sessions, participants are inspired by colleagues and thought leaders in education.
Visit www.modelschoolsconference.com/

Executive Coaching and Ongoing Monitoring

Job-embedded leadership coaching is provided by our team of accomplished education leaders who have “walked the walk.” High achieving learning occurs in environments with strong leadership, focused planning, and purposeful, aligned systems. We help school leaders plan for a different kind of change process that addresses the greatest areas of need, uses resources wisely, and motivates all stakeholders to work toward a shared vision.



The Collaborative Instructional Review (CIR) tool helps leaders manage the shifts required for effective instruction.

Professional Learning for Teachers

Research shows that supporting educators in multiple formats makes for effective and sustained adult learning. Our multifaceted system for professional learning fosters meaningful teacher growth and lasting, measurable success.

Our Professional Learning System Includes:



Classroom Readiness Support

Professional Learning Specialists visit all classrooms involved to quickly identify areas of need. As a result, a report is provided to district leadership indicating initial data to craft a targeted professional learning plan for each school and classroom.



Professional Learning Sessions

We help teachers deeply understand research and practice, how they will help their students, how to transform instruction, and how to successfully implement new strategies. We work on balancing information and collaborative work time so that participants can engage in hands-on experiences.



Implementation Fidelity Review

Professional Learning Specialists spend time in classrooms observing how their programs are used and providing support in scheduling and differentiating instruction.



Job-Embedded Coaching

With students at the center, our consultants foster a culture of collaboration. Taking the time to analyze, reflect on, and explore new ideas as partners, we support teachers' understanding and application of content knowledge and effective instructional practices. We'll address coaching beliefs, prepare goals, and ultimately provide an Instructional Support Blueprint, so all teachers know how to deliver high-quality instruction, step by step.



Lesson Modeling

Lesson Modeling by our specialists helps bring more rigorous and relevant instruction to life in the classroom. We provide a richly structured process that engages teachers in reviewing instructional strategies, observing those strategies in action, and learning how to apply new skills in their own classrooms.



Results Reporting

A Scholastic consultant works with teachers or administrators to analyze core reports, target individual students' needs, and identify next steps for instruction, monitoring, and assessment based on the report data. We roll up school- and classroom-driven indicators into complete reports that provide Success Indicators for ongoing improvement, at the beginning, middle, and end of year.

“Teachers who receive substantial professional development can **boost their students' achievement** by approximately **21 percentile points**.”

—Yoon, 2007



Our data collection and analysis tools provide robust reports that are used to spot trends and patterns, so you can make more informed decisions about targeting professional learning support, year after year.

Professional Learning for Teachers

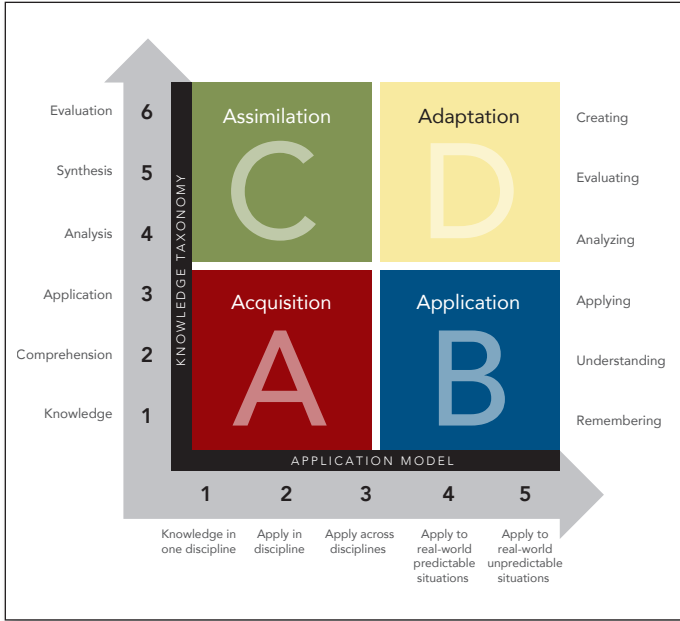
To truly achieve student learning goals, it's essential to equip ALL teachers in a school with the strategies necessary to support the needs of all students. We offer hundreds of courses and intensive coaching for:



ALL Teachers



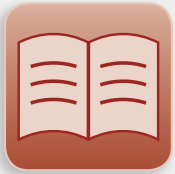
Regardless of grade level or subject-area focus, all teachers need a core set of foundational best practices to help drive student achievement. We help teachers make effective change to achieve the learning characterized by Quadrant D in the **Rigor/Relevance Framework®** from the International Center for Leadership in Education. The Framework helps examine curriculum, instruction, and assessment along the dimensions of higher standards and student achievement.



Rigor/Relevance Framework

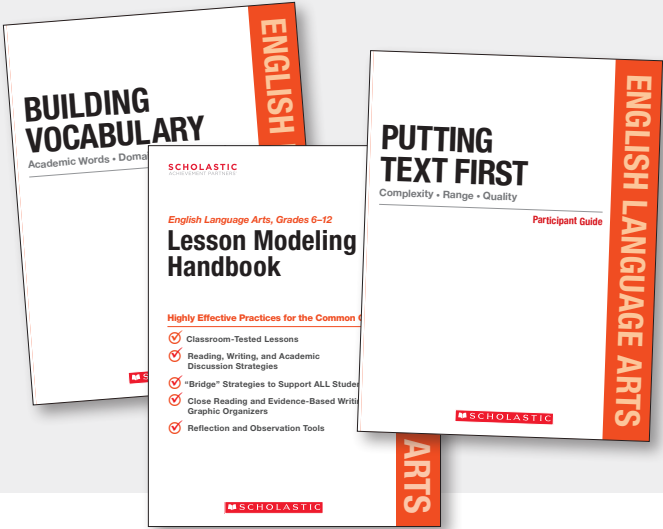
 **International Center for Leadership in Education**

Literacy Teachers



Literacy is the “gatekeeper” competency to all others. Proficient readers and writers enjoy increased achievement across all content areas. We’ll help you cultivate a school-wide literacy environment where students read and discuss books, proclaim a love of reading in school initiatives, and yearn for more independent reading time. With the right support and the best instructional practices, your faculty can create a thriving culture of literacy.

To get there, we offer effective strategies centered on a variety of topics such as making the shifts necessary for rigorous instruction, foundations of early literacy, effective guided reading instruction, independent reading for deeper comprehension, and building writing proficiency across the curriculum.



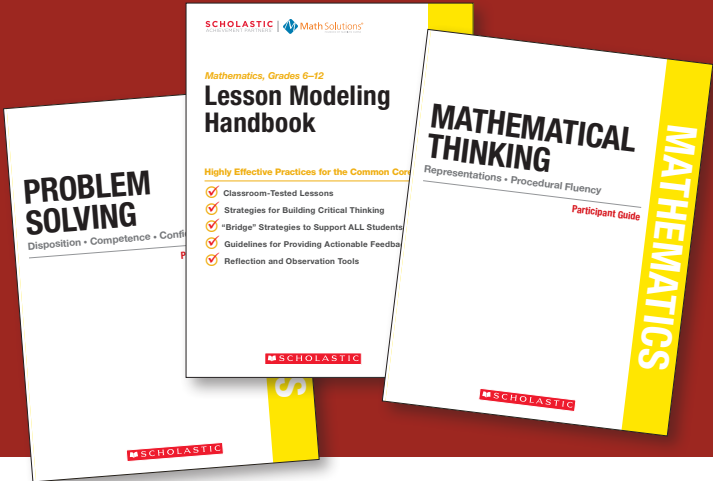
We offer a wide variety of services for literacy, math, and content-area teachers. Featured here are participant guides from a small selection of courses.

Math Teachers



Given the widely varying levels of teacher preparedness in math, professional development for effective teaching of mathematics is critical. Scholastic Achievement Partners has teamed up with Math Solutions, the nation’s leading provider of math professional development, to deliver high-quality learning resources and program implementation that support system-wide improvements in math instruction.

Our innovative professional learning opportunities use research-based foundations to build student skills and conceptual understanding, while surrounding teachers with the support they need in a variety of areas, including developing teacher content knowledge, building mathematical understanding, formative assessment to impact student learning, and more.



 **Math Solutions**
FOUNDED BY MARILYN BURNS

Program Implementation Support

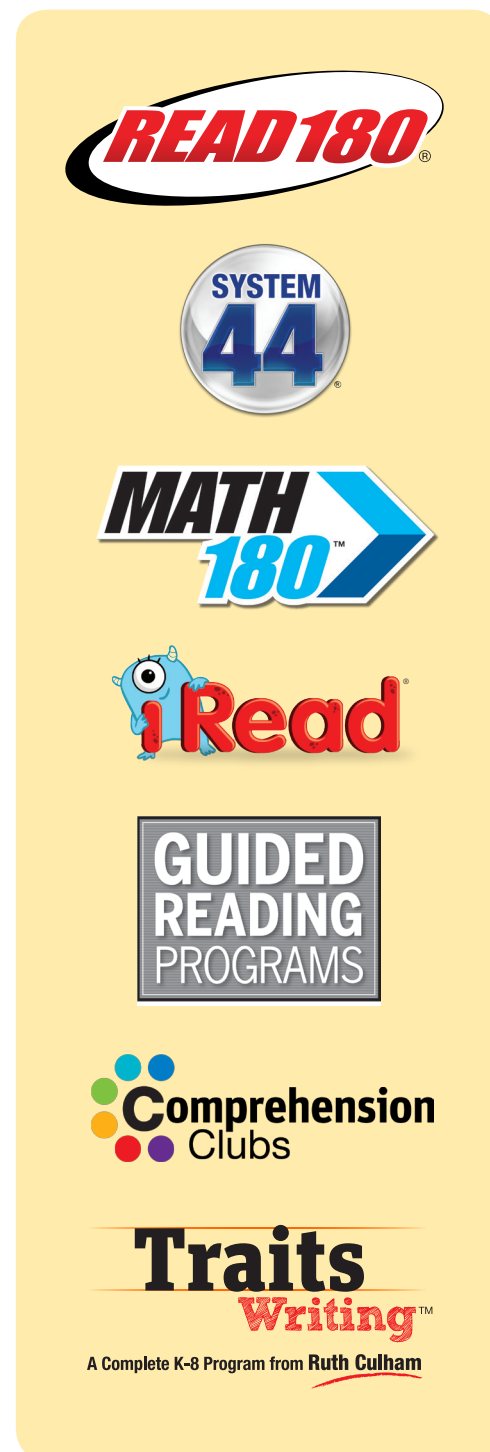
We have been at the forefront of improving literacy and math achievement for 95 years. We know that good teachers are constantly learning, honing their skills, and getting better at their craft. Supporting them, as well as leaders and coaches, in this process is the key to success—and leads to improved program outcomes and a reduction in teacher turnover.

Our programs include built-in supports, but the most successful districts develop a long-term plan for teacher support in areas such as analyzing assessment data, monitoring fidelity of implementation, improving instructional practices, and using data to differentiate instruction.

Achieving whole-school and-district success in literacy and math is typically a multiyear process. And we can help.



Various reports in our data suite help you initiate, develop, and sustain your program implementations.



Your Steps to Achieving a Successful Plan

Part of building a plan is addressing the resources needed to support the initiative on an ongoing basis. We provide what our experience proves you need for systemic change and sustained achievement:

- 1 Initiate a multiyear powerful professional learning plan** to support your investment in programs like *READ 180*, *MATH 180*, and *System 44*. Ensure this plan takes into account the need for collaborative, job-embedded coaching, robust support in year 1 of program implementation, and ongoing support in later years.
- 2 Develop expertise to monitor progress and analyze data to drive continuous improvement in instruction.** Ongoing implementation progress monitoring, data analysis, and reporting are essential for driving student achievement.
- 3 Sustain improvement by supporting interventions with a whole-school approach.**
 - Literacy, Math, and Intervention Teachers** need support that is differentiated relative to their experience and skill levels in implementing intervention programs.
 - Content-Area Teachers** need to be armed with a core set of literacy instructional support skills so they are equipped to deal with the unique needs of struggling readers in their classrooms.
 - Instructional Leaders** need to know what fidelity “looks” like, for monitoring success and direct coaching.

Family and Community Engagement

As a forward thinking educator, we know you know how essential it is to honor each family's unique culture and language—fostering open communication among caregivers, teachers, administrators, after-school librarians, and all community-based partners. Scholastic Family and Community Engagement (FACE) brings together resources that equip educators, parents, and communities with the strategies they need to boost the literacy skills of all children beyond the classroom.

FACE offers research-based programs aligned to the newly released U.S. Department of Education's Dual Capacity-Building Framework for Family-School Partnerships.

We offer professional development and resources to help educators implement Family and Community Engagement best practices to build and reinforce positive literacy practices for children from the earliest stages of learning through high school.

“Family Engagement in a student's academic career can have a **significant impact** on the student's attendance, academic achievement, and **overall attitude about school.**”

—Dr. Karen Mapp

MEET DR. KAREN MAPP

Dr. Mapp is a senior lecturer at the Harvard Graduate School of Education and author of the *Dual Capacity-Building Framework for Family-School Partnerships**. She serves as the lead advisor for Scholastic FACE, leading efforts to ensure that home, school, and community work together toward positive developmental outcomes for all students.



*To learn more about the framework visit scholastic.com/FACE/framework.

