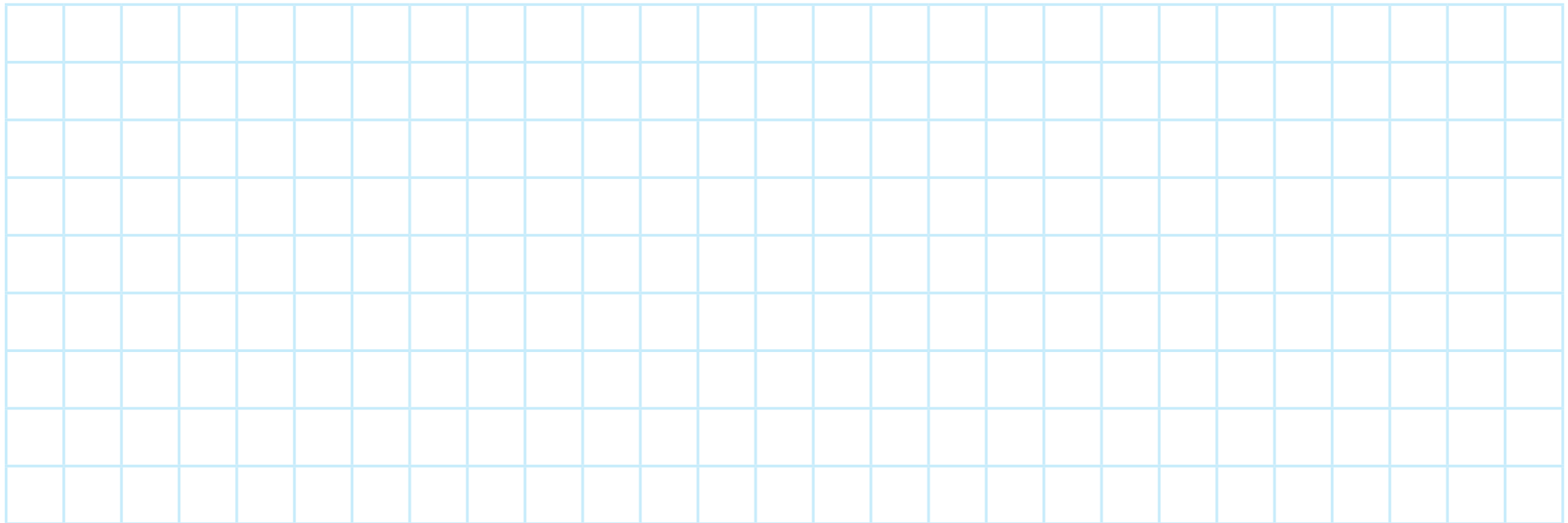
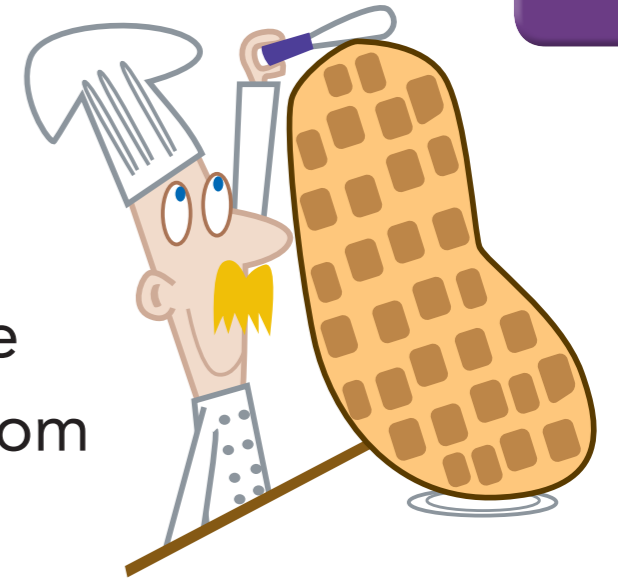
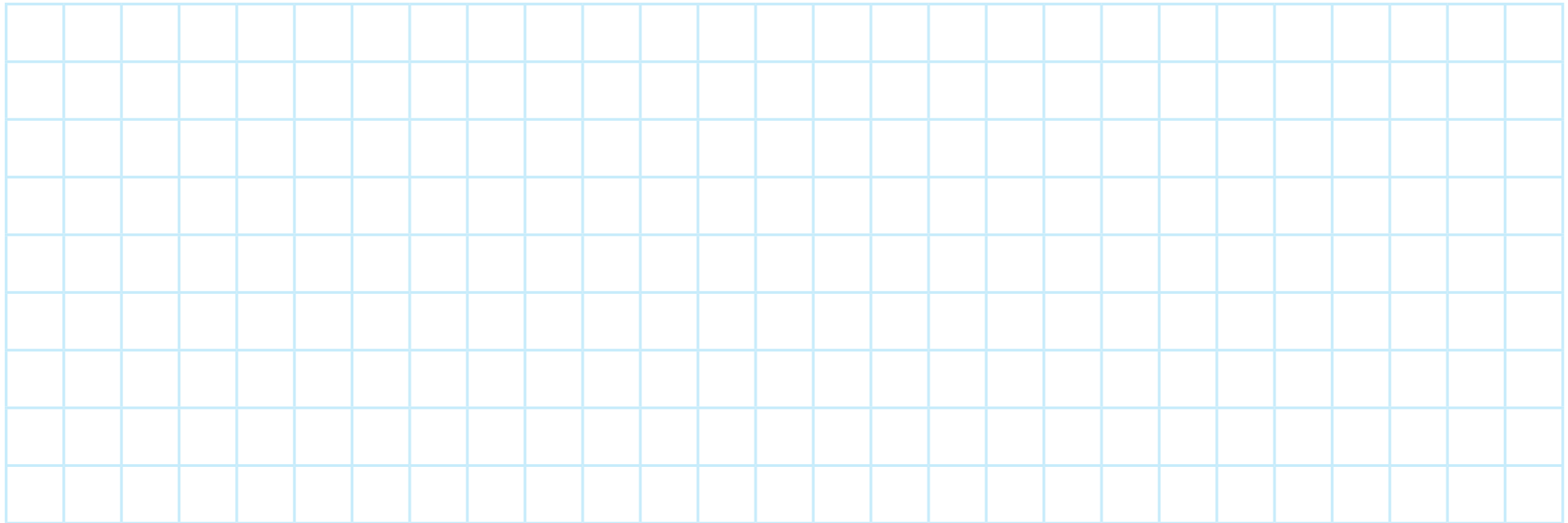


57. Pillsbury the pastry chef was baking a giant peanut cake to help celebrate National Nuts Day. He bought a huge sack of peanuts. He used $\frac{1}{4}$ of the peanuts in the top layer of the cake and $\frac{1}{2}$ of the peanuts in the bottom layer. What fraction of the peanuts did Pillsbury use?



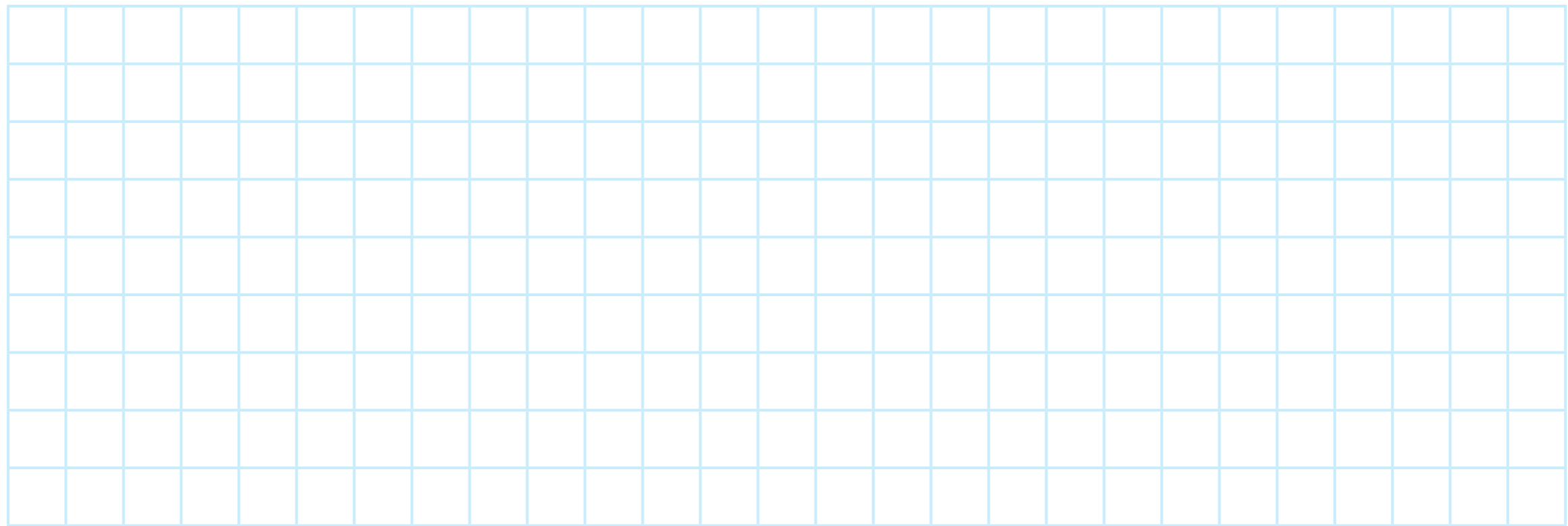
Pillsbury used _____ of the peanuts.

- 58.** There are 50 passengers in the first-class car on the train to Goolygoolyville. This is $\frac{10}{12}$ of the total number of passengers on the train. How many passengers are on the train altogether?



There are _____ passengers on the train altogether.

60. Joblinx from Planet Stapler brought a bar of a rare metal, Chocolatamite, to Earth. He was greeted by 10 Earthlings when he landed, so he cut the bar into 10 pieces for them. 3 of the Earthlings were allergic to it and did not take any. The rest each took a piece. What fraction of the bar did Joblinx give away?



Joblinx gave away _____ of the bar.